



**Investor & Climate Focused**

**~475mm BOE PLAY**

**OPENS A NEW GAS TREND**

***ESG KEY-FEATURES***

***GEOHERMAL POWER***

***GREEN HYDROGEN***

**“Let’s Protect the Earth”**

**Petrolex Operating Ventures #1 LLC**

Enercom Oil & Gas Conference - Denver

August 18, 2021

# *WHAT IS THE FUTURE OF UPSTREAM OIL & GAS INVESTING?*

**Can Shale Production Do It All?**

*Grow Balance Sheets, Fund the Energy Transition & Deliver Profits?*

*Maybe...or Maybe Not!*

**What about Big-Impact Conventional Projects?**

**Is It Time to Pivot & Diversify?**

***BIG-IMPACT CONVENTIONAL PROJECTS, YOU SAY...  
BUT WHERE TO LOOK???***

**Don't Pursue Uncalibrated Prospects**

**Look for Unique ESG-Friendly Opportunities**

**Comprehensive Derisking is Imperative**

**Seek Unbiased Competent Peer Reviewers**

# *SO, WHO IS PETROLEX & WHY SHOULD WE CARE?*

Our Company is Climate and Investor Focused

Our Teams are Project Management Experts

Our Offering is Low-Risk, High-Impact

We Prevent Unexpected Cash Calls

# *ABOUT US*

We are Funded by an International Company

Our Team of Engineers & Geoscientists are Best of Class

Our Unbiased Peer Reviewers came from Shell & Exxon

Started Working the Tuscaloosa Trend in the 1980's

# OUR INVESTMENT THESIS

This Business Cycle is our Leverage

Global Nat Gas Markets are Ramping

Our Wells have a Small, Low-Carbon Footprint

Natural Gas is a Second Pillar for Decarbonization

# WHAT KIND OF BIG CONVENTIONAL PLAY DO WE HAVE?

A Calibrated Step-Out to a Proven Gas Trend

Lloyds Insurance Syndicate Covers our Well

Major Contractors have “Skin in the Game”

This is Likely the Biggest Tuscaloosa Field in History

# OUR LOCATION IS SAFE & ACCESSIBLE

Close to Industrials & LNG Exporters

Good Road Access

Far Away from Any Dwellings

4000 SQ MILE STUDY AREA



THE PLAY OPENER, PROSPECT A Well #1

Petrolex Play Opener - Well 1  
Location Map in West Baton Rouge Parish



LNG Export Site?

~8 Miles

Mississippi River

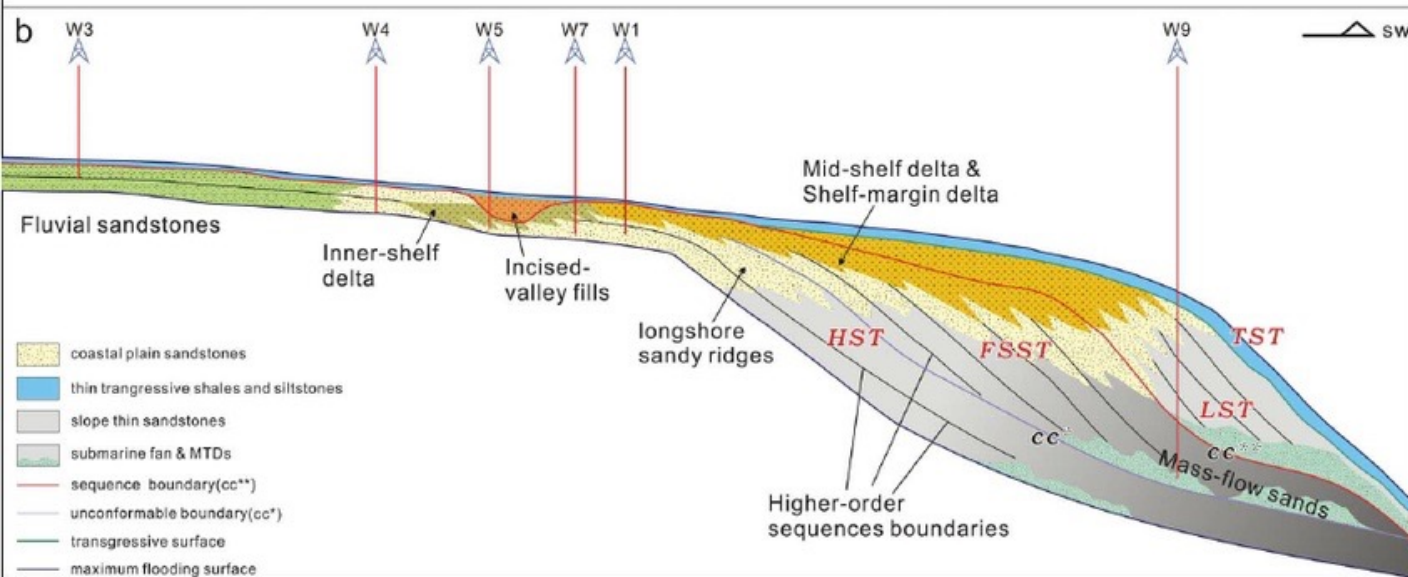
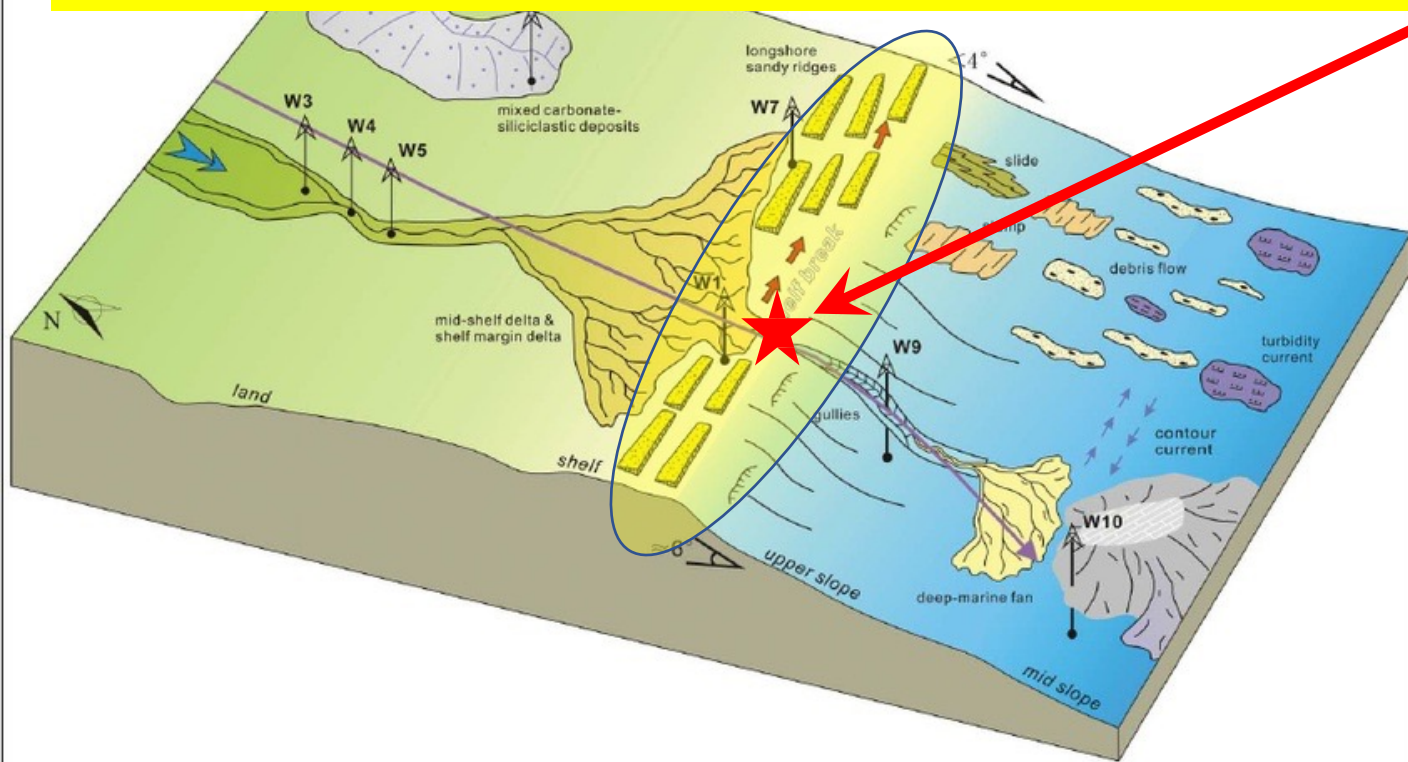
West Baton Rouge Parish



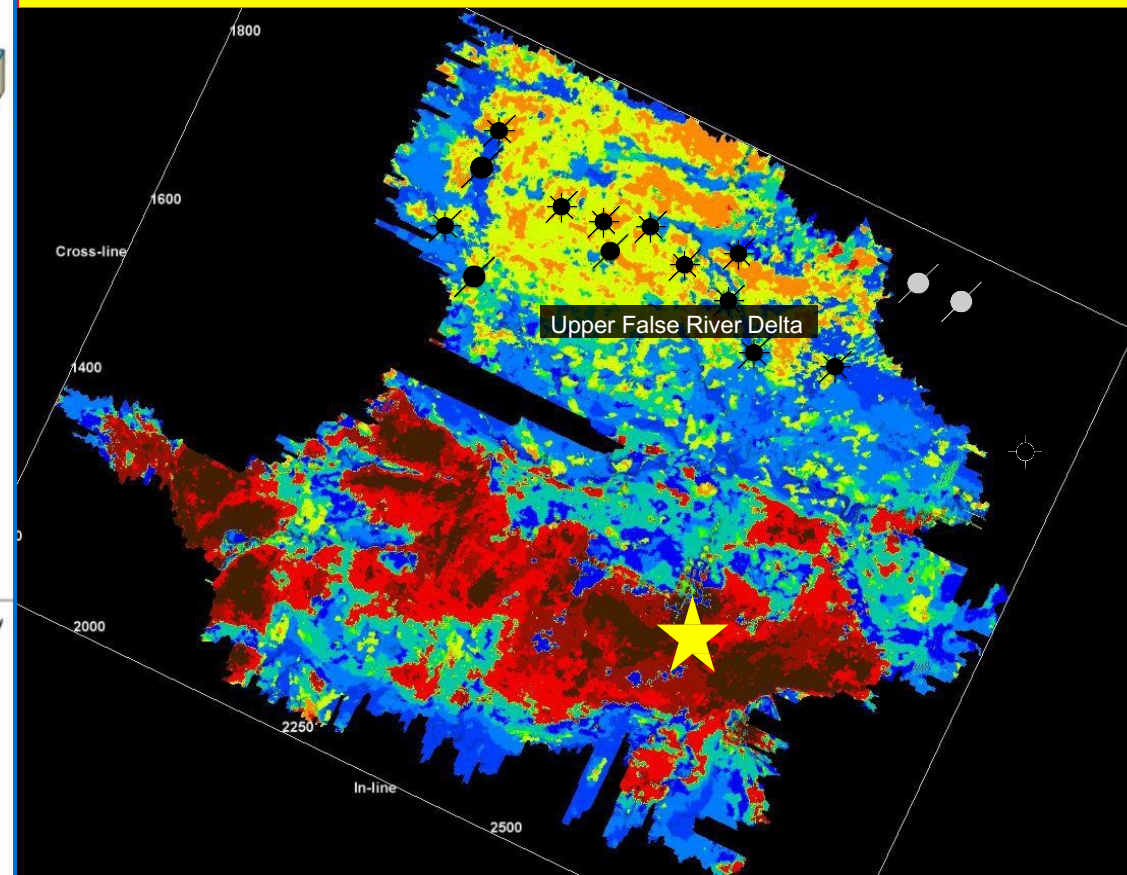
PETROLEX INVESTMENTS, LLC



# TUSCALOOSA-SAND EXPANSION "SWEET-SPOT"



# Shelf-Slope Break Setting Wave Dominated Delta (RED) Stacked Barrier Island Deposits



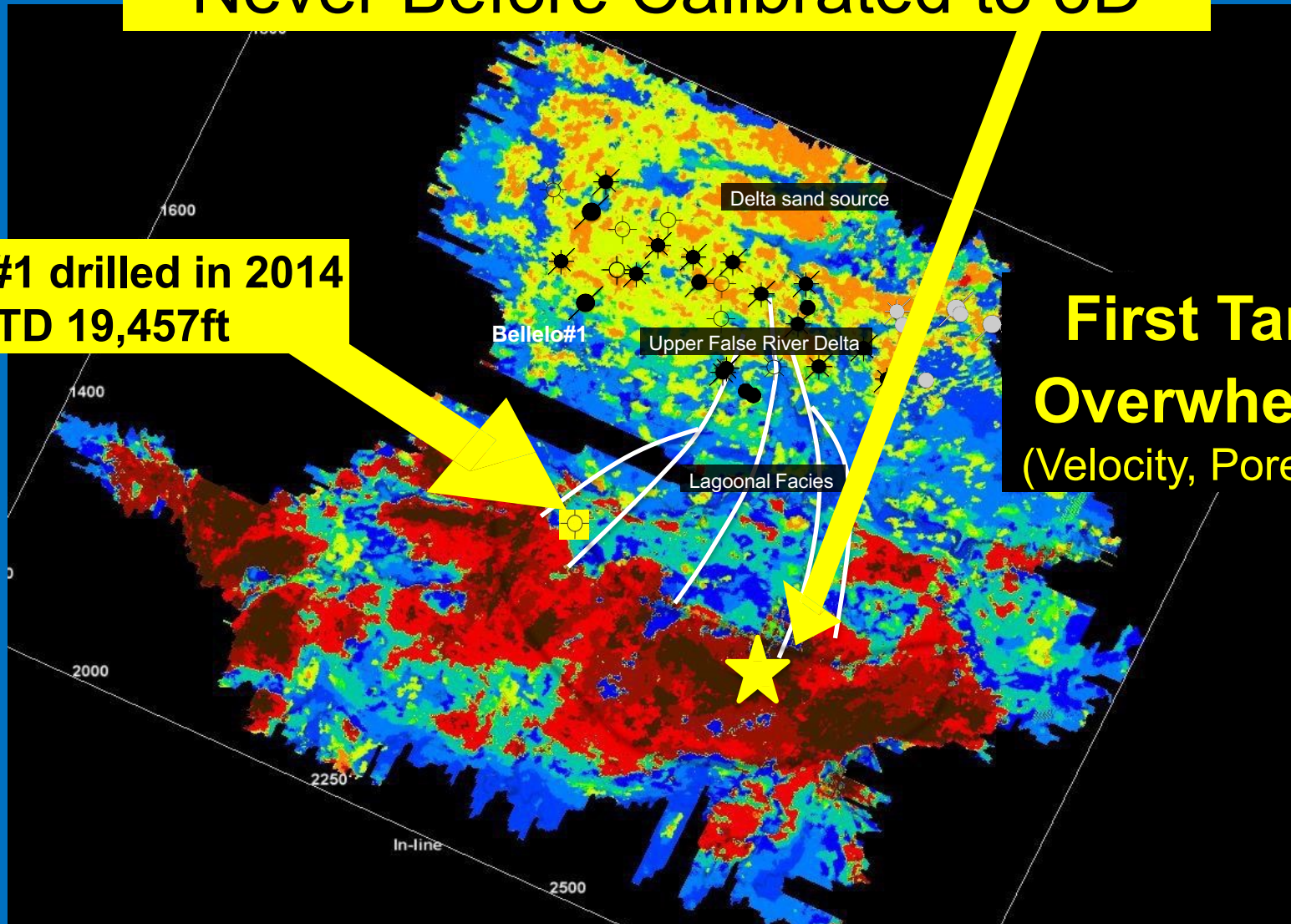
3,200FT SAND SECTION TO TEST

# Calibrated Step Out to Proven Gas Trend

Never Before Calibrated to 3D

Vitol #1 drilled in 2014  
TD 19,457ft

First Target Sand ~21,600ft  
Overwhelming Gas Evidence  
(Velocity, Pore-Pressure, Quantitative DHI's)



Primary Reservoirs >20,000 acres

# Gas Process Facility Site

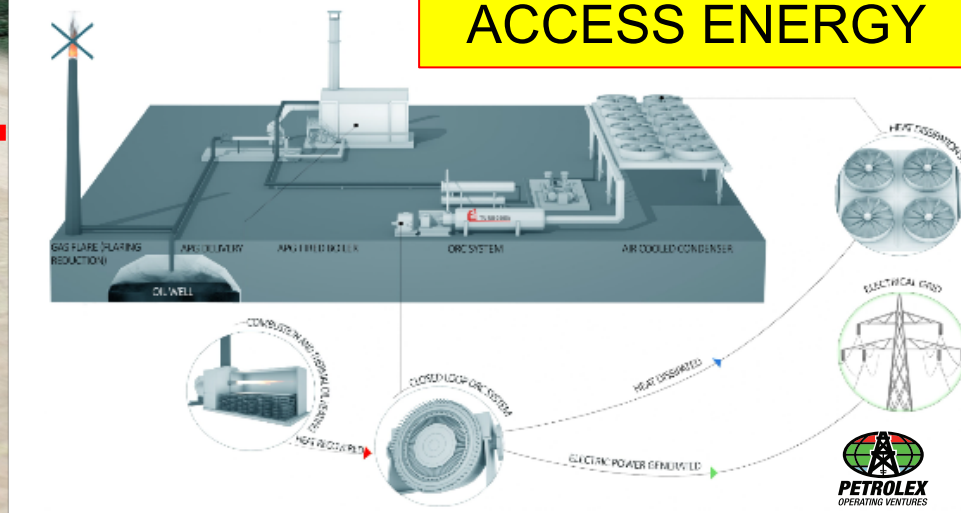
Geothermal Waste Heat



Here

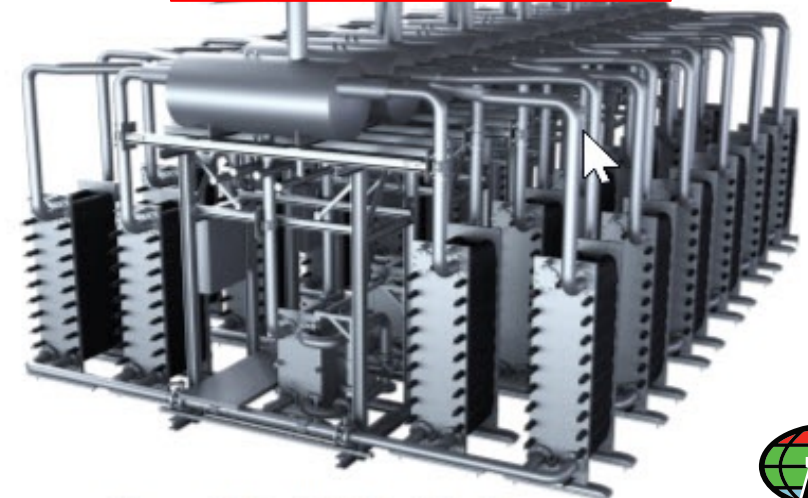


ASSOCIATED PETROLEUM GAS (APG)



CALNETIX & ACCESS ENERGY

SIEMENS ENERGY



Silyzer 300 – PEM Module Array



Green Power via Waste Heat / Gas Expansion  
Green Hydrogen Production  
24-7-365 Onsite Monitoring of GHG Emissions

# DRILLING TECHNOLOGY

Managed Pressure Drilling System Mitigates Drilling Risk

Closed Loop Mud System Enhances Environmental Protection

Logging While Drilling Allows Early Confirmation of a Gas Pay in Well

24-7 Communication to Investors on All Devices

# COMPETITION & PRODUCT SALES

There are High Barriers to Entry

Most Producers are Focused on Shale

Excess Power is Used to Generate Green Hydrogen

We Have Multiple Pipeline Off-Takers for Our Gas

# IN CONCLUSION

**Our Well #1 Should Discover a New Tuscaloosa Field**

**Our Terms of Trade Can be Customized for Your Group**

**Major Contractors have “Skin in the Game”**

**Our Lloyds Insurance Specialty Coverage Protects Investors**

**Learn How Preparation Meets Opportunity**



***PETROLEX***  
*OPERATING VENTURES*

***“Investor Focused”***

**Michael E. Kenney**  
**President & CEO**

**Petroleum Investments, LLC**  
**Email: [mikek@petrolexllc.com](mailto:mikek@petrolexllc.com)**  
**Mobile: 337-322-2984**