



**Market Development Presentation**

**Prepared For:**

**EnerCom**

**The Oil & Gas Conference**

**Prepared: August 17, 2021**

**sparda**  
Renewables

- ❑ Dairy Gas Rights Agreement executed with Oklahoma's second largest dairy, Virginia's second largest dairy
- ❑ 18 Projects under advanced due diligence
- ❑ 12 comprehensive CI Score Reports complete (TX, WA, IN, MI, KS, VA, OK, FL, IA)
- ❑ Closely reviewing Chicken Litter Pathway for Eastern Oklahoma opportunities

- ❑ Executed Lease, Easement and Landfill Gas Rights Agreement with two top-tier municipalities
- ❑ One Landfill Gas Rights Agreements before City Council in the next 60 days
- ❑ EPA LMOP review of all potential Oklahoma and Kansas Landfill Gas Projects
- ❑ Comprehensive Strategic Relationship with largest U.S. landfill gas rights and collection engineering firm



- ❑ Comprehensive Review of >5MW Projects in OK, TX, and PA
- ❑ Due Diligence underway with Large Oklahoma Native American Tribe for Micro-Grid Opportunity
- ❑ Default feature in all agriculture RNG projects
- ❑ Comprehensive Strategic Relationship with large-scale distributed generation firm with >\$3B in financing

- ❑ 2 Wastewater Treatment (WWTP) Gas Rights Agreement before City Council in the next 120 days
- ❑ ODEQ review of all potential Oklahoma WWTP Projects
- ❑ DEQ review all potential New Jersey WWTP Projects
- ❑ Comprehensive Strategic Relationship with large regional EPC firm specializing in WWTP

# SPARQ – COMPRESSED NATURAL GAS INFRASTRUCTURE SUMMARY

**SITE BACKGROUND [CURRENT AS OF 08/15/21]**

**11 SITES IN OPERATION + PROJECT PIPELINE OF 40+ ADDITIONAL SITES**



#	SITE NAME	SITE ADDRESS	CURRENT STATUS	STRATEGIC PARTNERSHP
1.	SPARQ – PUEBLO	620 W. 4 <sup>th</sup> St., Pueblo, CO 81003	Open For Business	ACORN PETROLEUM [18 TOTAL SITES]
2.	SPARQ – BATON ROUGE	8968 S. Choctaw Dr., Baton Rouge, LA 70815	Open For Business	LAVIGNE OIL COMPANY [55 TOTAL SITES]
3.	SPARQ – TRINIDAD	806 E. Goddard Ave., Trinidad, CO 81082	Open For Business	DURAN OIL COMPANY [14 TOTAL SITES]
4.	SPARQ – WATONGA	320 S. Clarence Nash Blvd., Watonga, OK 73772	Open For Business	HUTCH'S [12 TOTAL SITES]
5.	SPARQ – GARDEN CITY	156 N. Campus Dr., Garden City, KS 67846	Open For Business	CITY OF GARDEN CITY [MUNICIPAL REFUSE COLLECTION]
6.	SPARQ – EATON	250 E. Collins St., Eaton, CO 80615	Open For Business	AGFINITY [LARGE FARM CO-OP]
7.	SPARQ – EL RENO	1505 S. Rock Island Ave., El Reno, OK 73036	Open For Business	OEMA [MUNICIPAL REFUSE COLLECTION]
8.	SPARQ – LAWTON	2098 SW 6th St., Lawton, OK 73501	Open For Business	CITY OF LAWTON [MUNICIPAL REFUSE COLLECTION]
9.	SPARQ – MOORE	512 NW 27 <sup>th</sup> St., Moore, OK 73160	Open For Business	CITY OF MOORE [MUNICIPAL REFUSE COLLECTION]
10.	SPARQ – TULSA	13003 E. Admiral Pl., Tulsa, OK 74116	Open For Business	TIMMONS OIL COMPANY [BULK FUEL HAULING]
11.	SPARQ – OKLAHOMA CITY	3800 SW 10 <sup>th</sup> St., Oklahoma City, OK 73108	Open For Business	HASKELL LEMON CONSTRUCTION [ASPHALT AND CONSTRUCTION]
12.	SPARQ – BATON ROUGE AIRPORT	8420 Veterans Memorial Blvd., Baton Rouge, LA 70807	Site Under Contract	CITY OF BATON ROUGE
13.	SPARQ – WAKEENEY	516 S. 1 <sup>st</sup> St., WaKeeney, KS 67672	Site Due Diligence Underway	24/7 FUELS
14.	SPARQ – ATLUS	701 S. Jackson St., Altus, OK 73521	Vehicle Due Diligence Underway	EVANS AND ASSOCIATES READY-MIX
15.	SPARQ – RIFLE	23899 Highway 6, Rifle, CO 81650	Colorado Energy Office Grant Award	MASTER PETROLEUM COMPANY

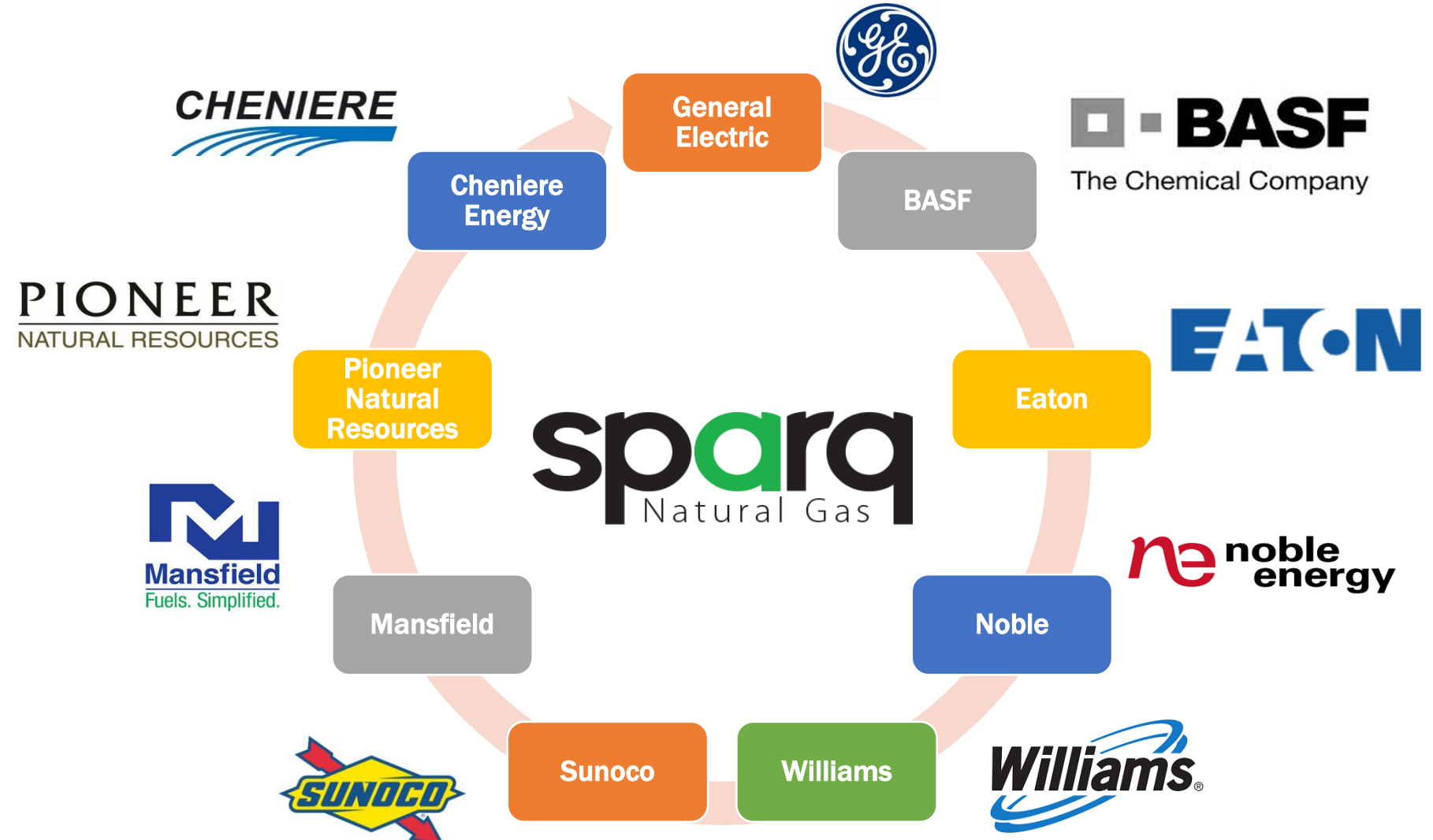


156 Campus Dr., Garden City, KS 67846



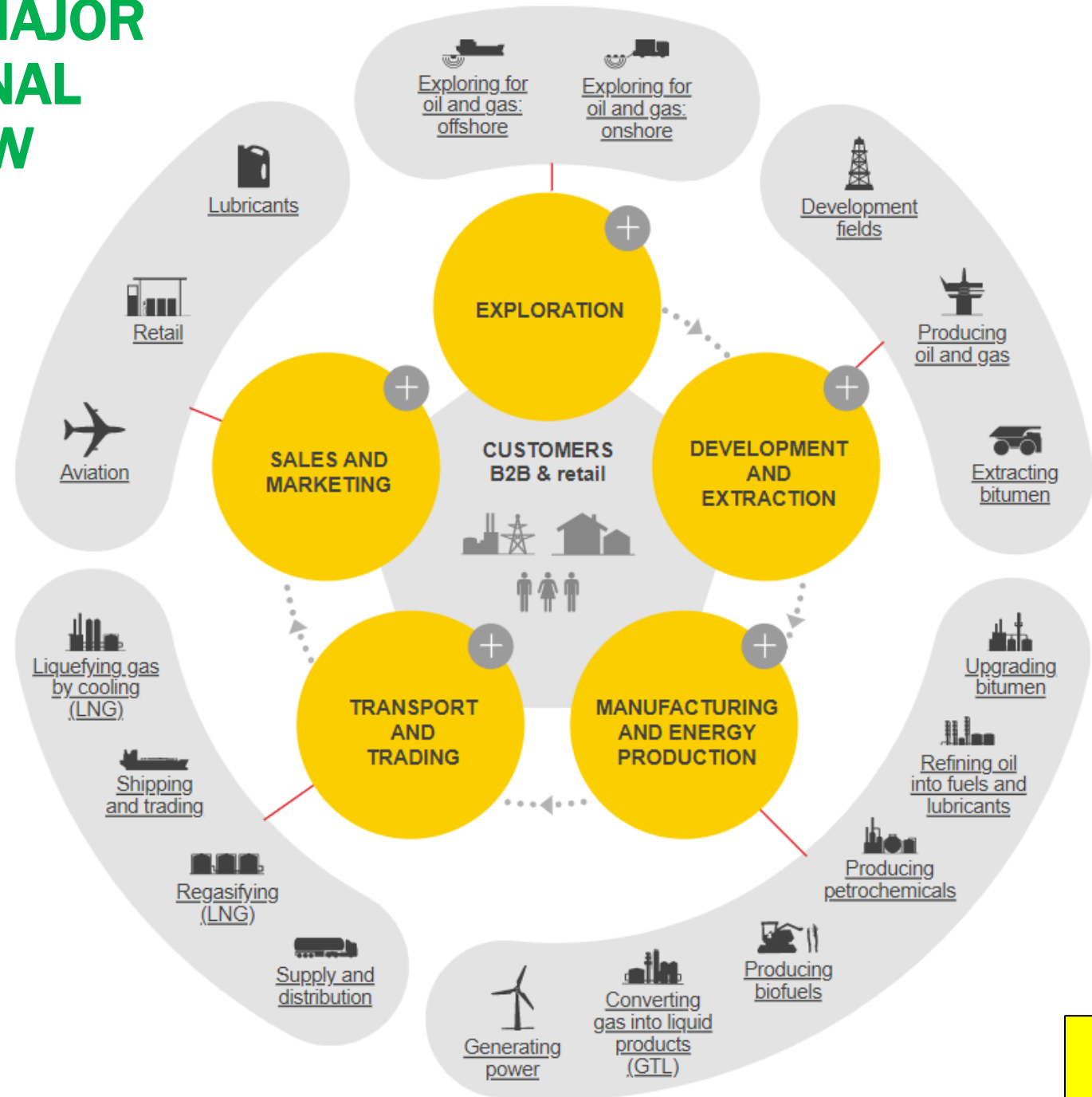
# COMPANY OVERVIEW

## ADVISORY PRACTICE LEADING TO CURRENT MARKET POSITION

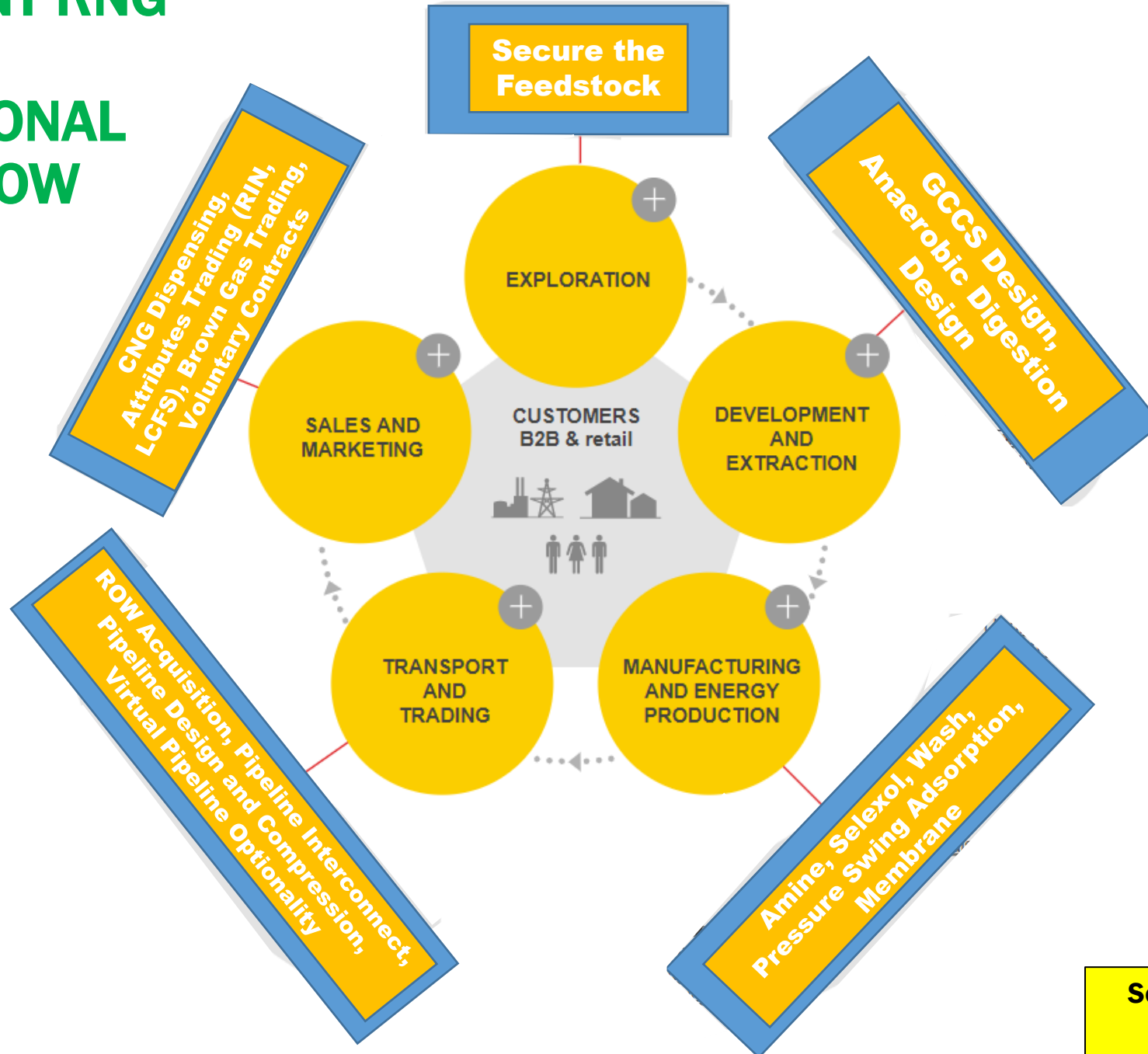


Sparq's accelerated infrastructure development is enhanced by fee-based consulting and advisory work completed with many admired and well-respected multi-national clients

# INTEGRATED MAJOR ORGANIZATIONAL PROCESS FLOW



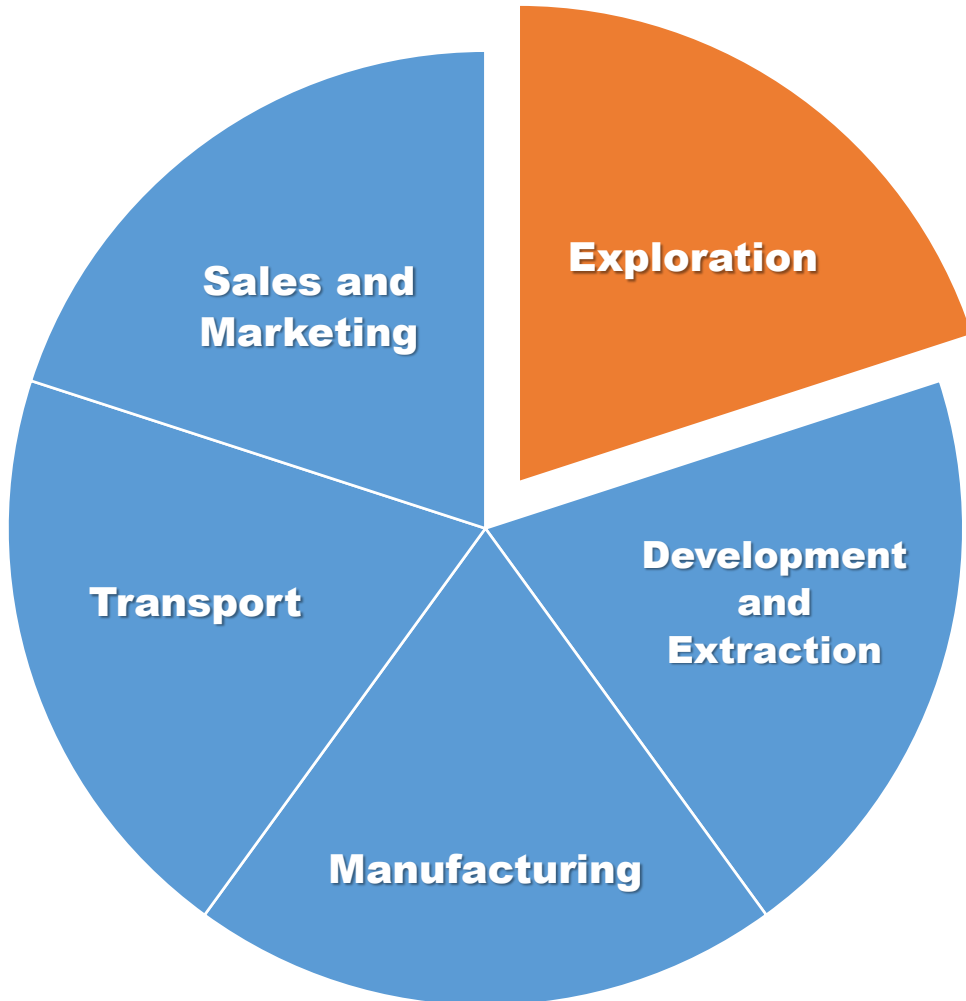
# INDEPENDENT RNG DEVELOPER ORGANIZATIONAL PROCESS FLOW



Source: Shell Investors' Handbook + Sparq Day-to-Day Business



# RNG DEVELOPMENT PROCESS FLOW



**Lease, Easement,  
and Landfill Gas  
Rights Agreement**

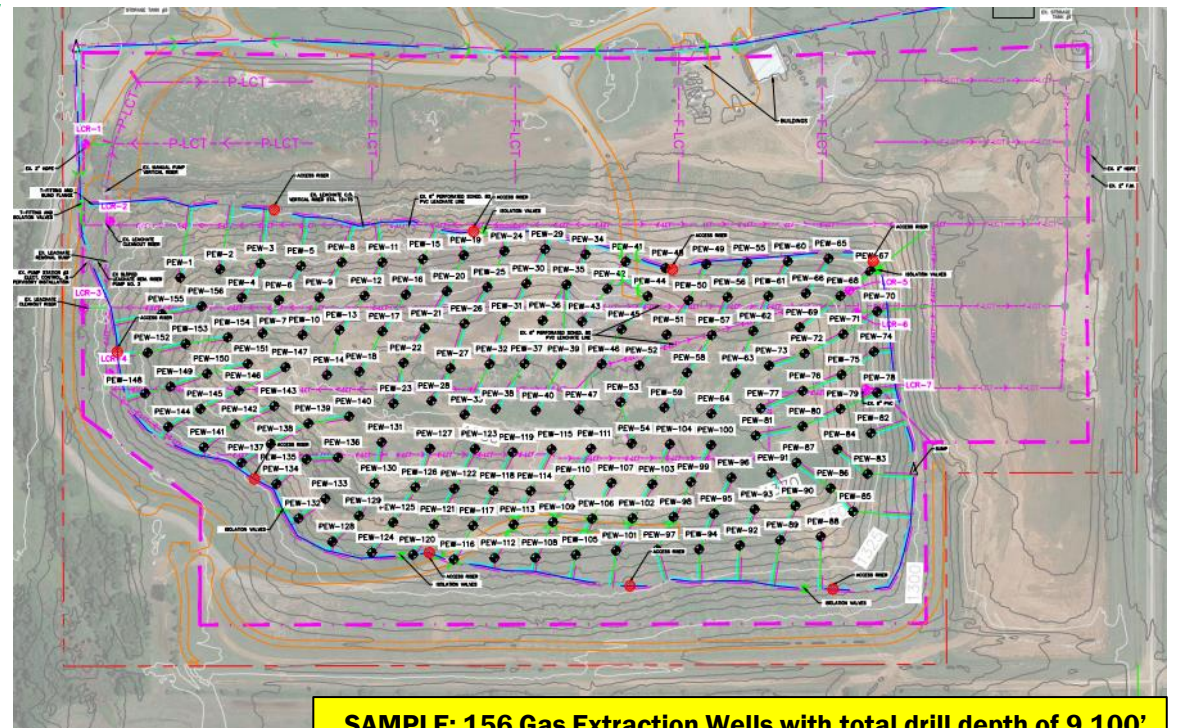
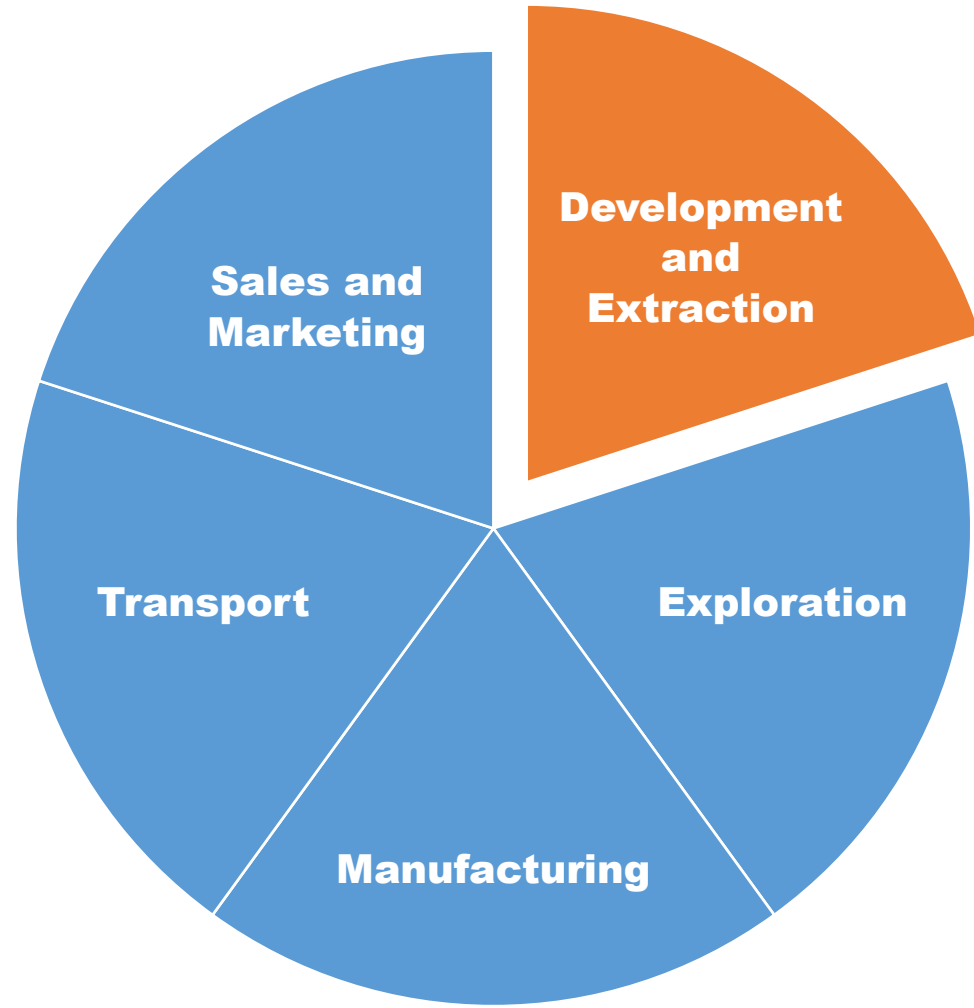
**Easement and  
Food Waste  
Supply Agreement**

**Manure Rights  
Agreement**

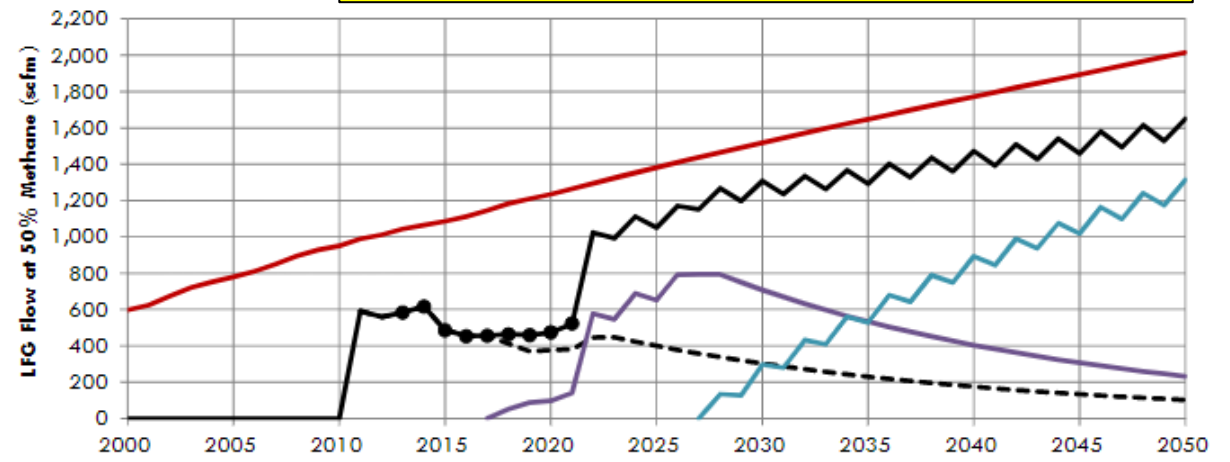
**Subordination,  
Non-Disturbance,  
and Attornment  
Agreement**

**RFP**

# RNG DEVELOPMENT PROCESS FLOW



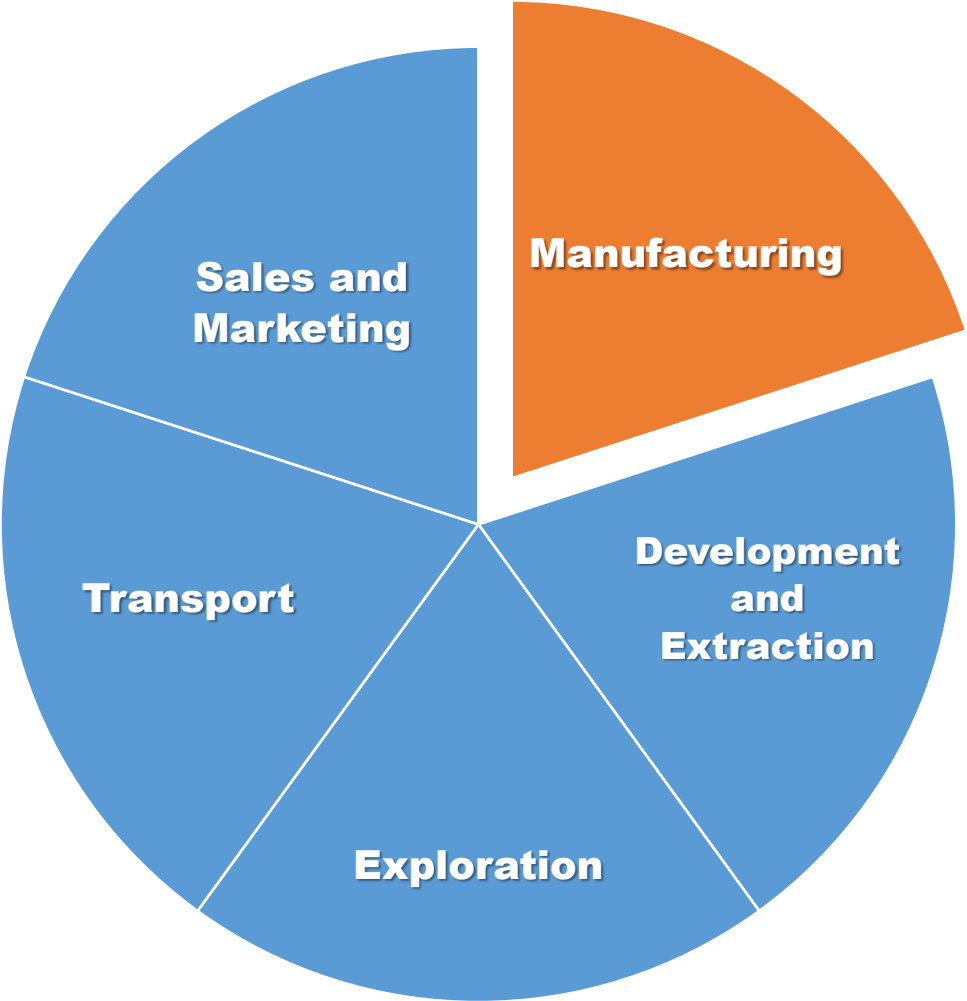
**SAMPLE: 156 Gas Extraction Wells with total drill depth of 9,100'**



- Total Site LFG Recovery Potential
- - - SE & Cells 1-3 LFG Recovery
- Cells 6 & 7 LFG Recovery
- Total Site Recovery from Existing/Planned System
- Cell 4/5 LFG Recovery
- Actual LFG Recovery

**SAMPLE: Gas productive curve at 2,000/SCFM LFG Recovery Potential**

# RNG DEVELOPMENT PROCESS FLOW



**BIOFERM - PSA SYSTEM**

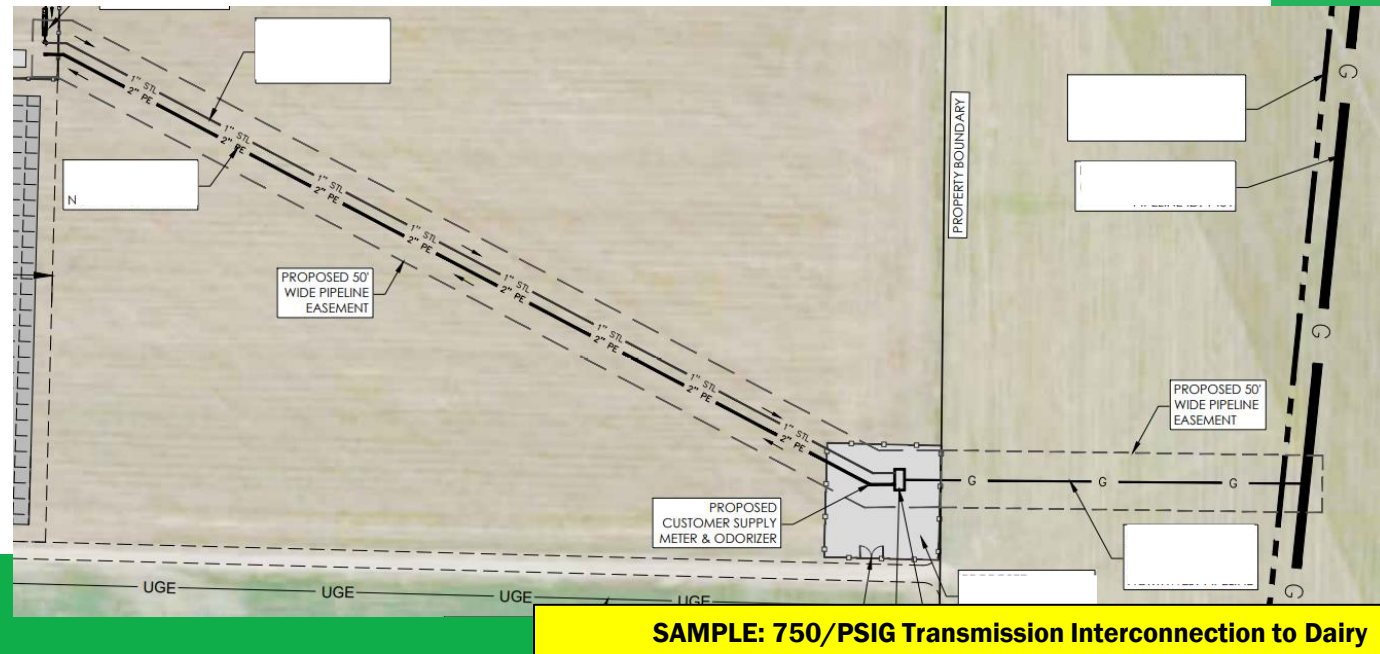
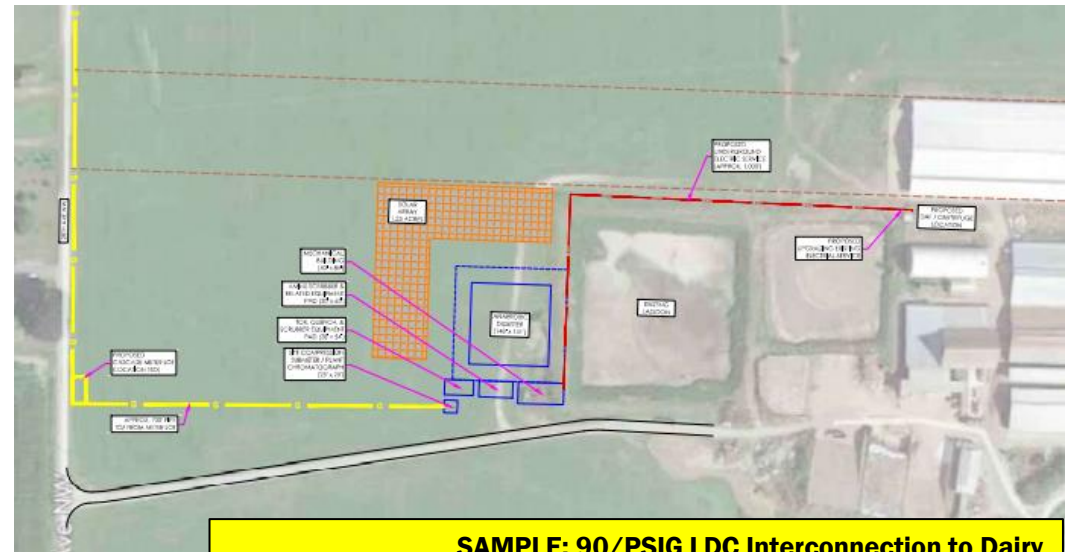
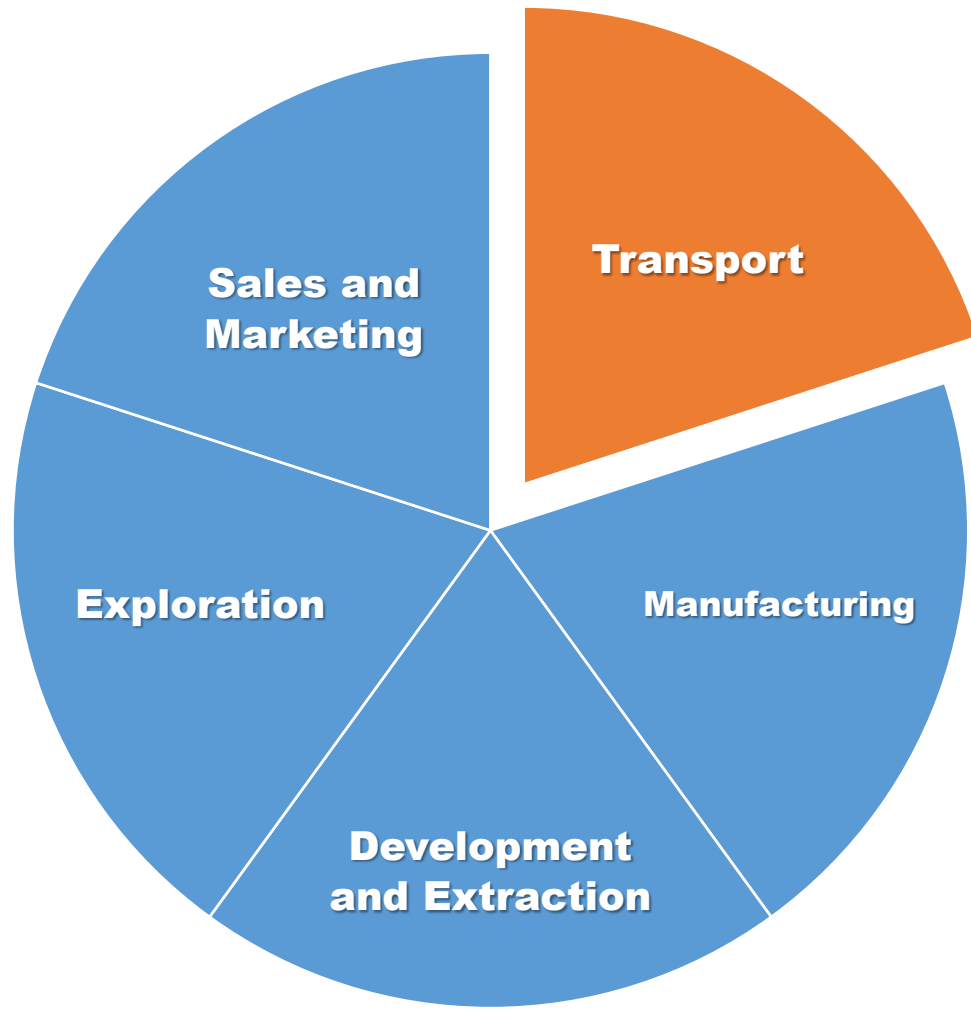


**XEBEC - PSA SYSTEM**

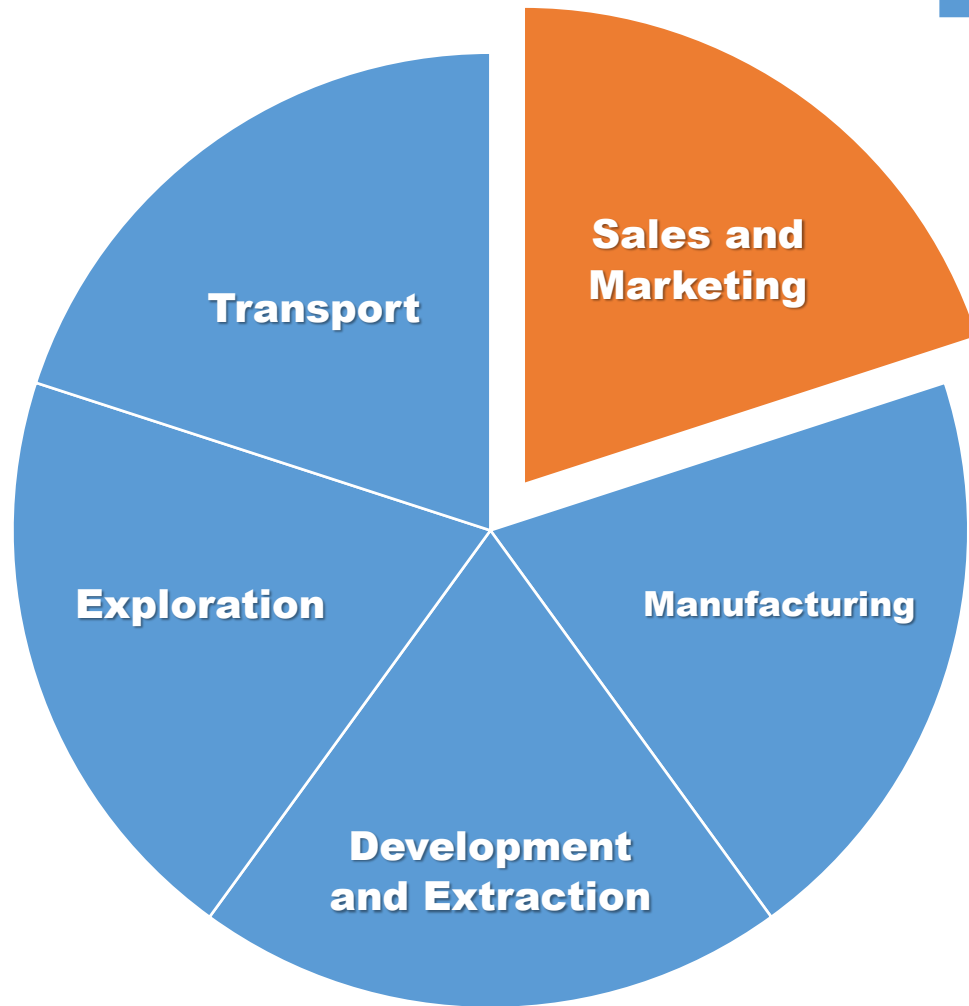


**WARTSILA - AMINE SYSTEM**

# RNG DEVELOPMENT PROCESS FLOW



# RNG DEVELOPMENT PROCESS FLOW



## ENVIRONMENTAL ATTRIBUTES

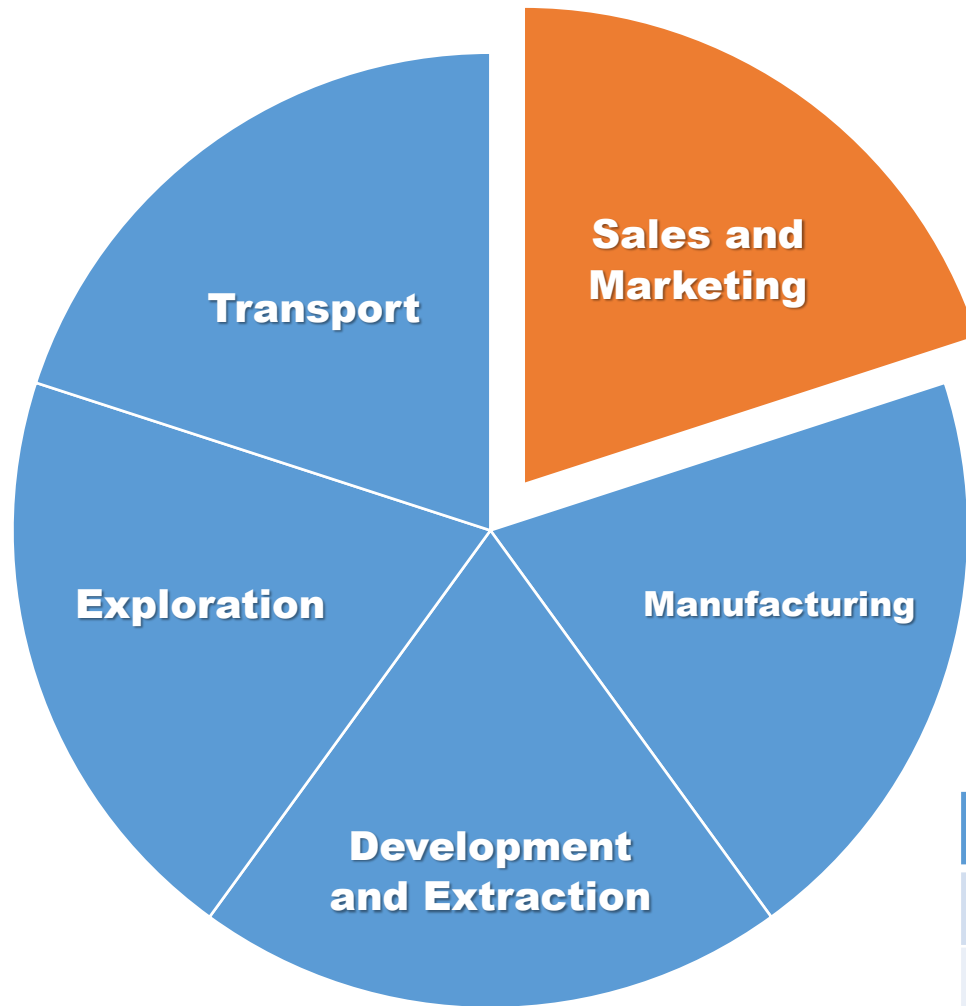
## Renewable Fuel Standard (RFS)

- ❑ Must be shown that amount of the biogas/CNG/LNG was used for transportation purposes only, **and for no other purpose**
- ❑ §80.1426(f)(11)(ii)(C)
  - ❑ For purposes of this section, CNG or LNG produced from biogas that is only distributed via a closed, private, non-commercial system is considered renewable fuel for which RINs may be generated if all of the following apply:...(C) The CNG/LNG is used as a transportation fuel **and for no other purposes.**
- ❑ §80.1454(k)(1)(v)
  - ❑ Affidavits, EPA-approved documentation, or data from a real-time electronic monitoring system, confirming that the amount of the biogas/CNG/LNG or renewable electricity relied upon under §80.1426(f)(10) and (11) was used for transportation purposes only, **and for no other purpose.**

# RNG DEVELOPMENT PROCESS FLOW

## Daily RIN, LCFS & CFP Update

8/16/21



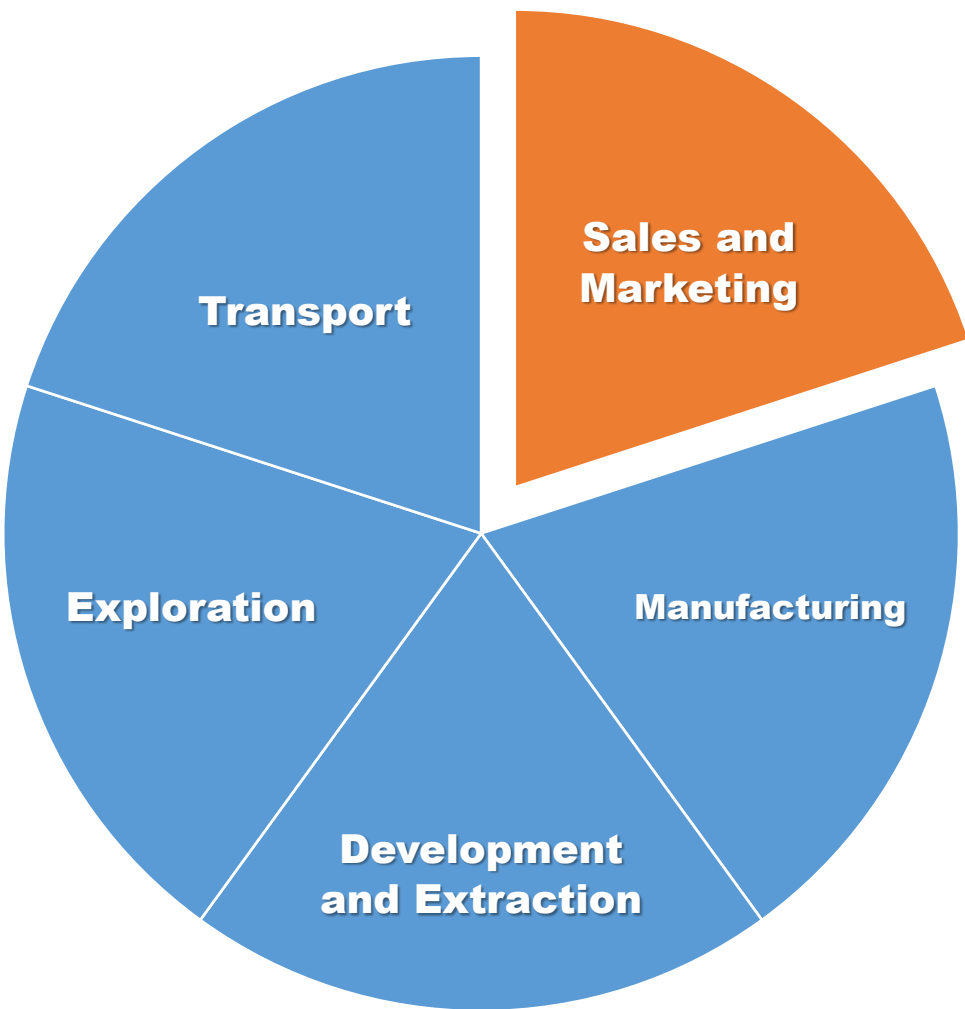
D-Code	Average Price			Closing Value		
	2019	2020	2021	2019	2020	2021
D3	\$3.170	\$3.220	\$3.185	\$3.170	\$3.220	\$3.185
D4	\$1.820	\$1.860	\$1.800	\$1.820	\$1.860	\$1.800
D5	\$1.810	\$1.850	\$1.790	\$1.810	\$1.850	\$1.790
D6	\$1.660	\$1.665	\$1.655	\$1.660	\$1.665	\$1.660
	Average Price			Closing Value		
California LCFS Credit	\$179.50			\$179.50		
Oregon CFP Credit	\$125.00			\$125.00		

Data Provided in the EcoEngineers Daily RIN Price Update is intended for informational purposes only.

D-Code / LCFS	Avg. Price	MMBTU Value
<b>D3</b>	<b>\$3.185</b>	<b>\$37.35</b>
<b>D5</b>	<b>\$1.790</b>	<b>\$20.99</b>
<b>LCFS Credit (@ -250)</b>	<b>\$179.50</b>	<b>\$62.75</b>

**08/16/21 HENRY HUB NATURAL GAS: \$3.95**

# RNG DEVELOPMENT PROCESS FLOW



## L9N™



NOx Emission	0.02 g / bhp-hr. (90% below EPA)
Maximum Horsepower	320 HP   239 kW
Peak Torque	1,000 LB-FT   1,356 Nm
Governed Speed	2200 RPM
Type	4-cycle, spark-ignited, in-line 6-cylinder, turbocharged, CAC
Engine Displacement	540 CU IN   8.9 LITERS
Number of Cylinders	6
Operating Cycles	4
Net Weight (dry)	1,625 lb   737 KG
Fuel Type	CNG / LNG / RNG
Aftertreatment	Three-Way Catalyst

## ISX12N™



NOx Emission	0.02 g / bhp-hr. (90% below EPA)
Maximum Horsepower	400 HP   298 kW
Peak Torque	1,450 LB-FT   1,966 Nm
Governed Speed	2100 RPM
Type	4-cycle, spark-ignited, in-line 6-cylinder, turbocharged, CAC
Engine Displacement	762.2 CU IN   11.9 LITERS
Number of Cylinders	6
Operating Cycles	4
Net Weight (dry)	2,650 lb   1,202 KG
Fuel Type	CNG / LNG / RNG
Aftertreatment	Three-Way Catalyst

# HOW DO FARMS AND MUNICIPALITIES BENEFIT FROM RENEWABLES?



**Reduction in  
greenhouse gas  
emissions**



**Increased U.S. energy  
production**



**New waste  
management  
options**



**Additional revenue  
stream for American  
Farmers and American  
Cities**



# CONTACT INFORMATION

## **NORMAN HERRERA**

Chief Executive Officer  
norman.herrera@sparqrenew.com  
405-896-5099

## **SUFYAN QARNI**

Chief Operating Officer  
sufyan.qarni@sparqrenew.com  
405-896-5097

## **DAN GENOVESE**

Finance and Business Development  
dan.genovese@sparqrenew.com  
303-807-8359

## **STEVEN PHELAN**

Accounting, Regulatory, Compliance  
steven.phelan@sparqrenew.com  
405-896-5096

## **MICHELLE GOODMAN**

Office Manager  
michelle.goodman@sparqrenew.com  
405-896-5098



**Landmark Towers  
3555 NW 58<sup>th</sup> Street  
Suite 625 West  
Oklahoma City, OK 73112**

**Main: 405-896-5096  
Toll Free: 844-772-7764  
info@sparqng.com  
info@sparqrenew.com  
www.sparqrenew.com**



**NGVAMERICA**  
Natural Gas Vehicles for America